

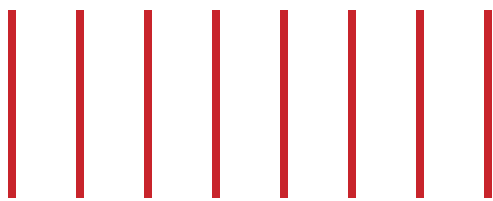


oscar & oscar tondo



aluminium
radiators

GLOBAL 
R A D I A T O R I





oscar tondo

Simple and straightforward design to implement a technological heart: high thickness of the water channel, an exclusive welding process to fuse die-cast and extruded aluminum.

Oscar is the concrete answer to the public spaces, hotels and private needs. Is the result of the Global continuous technological and aesthetic research.



oscar

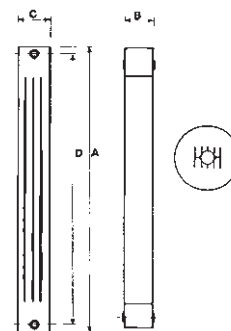
- **HIGH THERMAL OUTPUT** Guaranteed by certification, according to the norm EN 442, from the "Politecnico" in Milan. The high thermal output allows less bulky radiators to be installed.
- **ENERGY SAVING WITH MAXIMUM COMFORT** With the Global radiators the regulation of the temperature is easy and inexpensive. An ideal temperature for every environment according to personal needs is rapidly achieved.
- **VERY LONG DURATION** Thanks to the high quality of the material, that gives the maximum guarantee of resistance and duration. The double protection in the "anaphoresis-bath" followed with epoxy power enameling guarantees a perfect and durable finish.
- **EASIER INSTALLATION** Due to the lightness of the aluminum and the sectional elements that allow greater ease and flexibility of installation.
- **CERTIFIED QUALITY AND ENVIRONMENTAL** The ICIM certified on 1994 (norm ISO 9001:2000) the Quality System and on 2001 (norm UNI EN ISO 14001) the System of Environmental Management.

STRONG LIGHT ELEGANT

| Model | Dimensions in mm | | | | ø con- nection | empty weight Kg ca. | contents in water in litres | Heat output EN 442 | | | | Exponent n. | Coefficient Km |
|------------------|-------------------|-------------|------------|-------------------|-------------------|---------------------------|-----------------------------------|--------------------|------------|---------|---------|----------------|-------------------|
| | A total height | B length | C depth | D pipe centres | | | | ΔT 50°C | | ΔT 60°C | | | |
| | | | | | | | | Watt | *Kcal/h | Watt | *Kcal/h | | |
| OSCAR 2000 | 2046 | 80 | 95 | 2000 | 1" | 3,86 | 0,76 | 321 | 277 | 411 | 355 | 1,35280 | 1,61490 |
| OSCAR 1800 | 1846 | 80 | 95 | 1800 | 1" | 3,53 | 0,69 | 297 | 256 | 379 | 327 | 1,35295 | 1,48966 |
| OSCAR 1600 | 1646 | 80 | 95 | 1600 | 1" | 3,18 | 0,62 | 271 | 234 | 347 | 299 | 1,35310 | 1,36136 |
| OSCAR 1400 | 1446 | 80 | 95 | 1400 | 1" | 2,80 | 0,56 | 245 | 211 | 314 | 271 | 1,35325 | 1,23096 |
| OSCAR 1200 | 1246 | 80 | 95 | 1200 | 1" | 2,43 | 0,49 | 218 | 188 | 279 | 241 | 1,35340 | 1,09584 |
| OSCAR 1000 | 1046 | 80 | 95 | 1000 | 1" | 2,05 | 0,42 | 190 | 164 | 244 | 210 | 1,35355 | 0,95514 |
| OSCAR 900 | 946 | 80 | 95 | 900 | 1" | 1,99 | 0,41 | 175 | 151 | 223 | 193 | 1,34630 | 0,90160 |
| OSCAR TONDO 2000 | 2046 | 80 | 95 | 2000 | 1" | 3,86 | 0,76 | 321 | 277 | 411 | 355 | 1,35280 | 1,61490 |
| OSCAR TONDO 1800 | 1846 | 80 | 95 | 1800 | 1" | 3,53 | 0,69 | 297 | 256 | 379 | 327 | 1,35295 | 1,48966 |
| OSCAR TONDO 1600 | 1646 | 80 | 95 | 1600 | 1" | 3,18 | 0,62 | 271 | 234 | 347 | 299 | 1,35310 | 1,36136 |
| OSCAR TONDO 1400 | 1446 | 80 | 95 | 1400 | 1" | 2,80 | 0,56 | 245 | 211 | 314 | 271 | 1,35325 | 1,23096 |
| OSCAR TONDO 1200 | 1246 | 80 | 95 | 1200 | 1" | 2,43 | 0,49 | 218 | 188 | 279 | 241 | 1,35340 | 1,09584 |
| OSCAR TONDO 1000 | 1046 | 80 | 95 | 1000 | 1" | 2,05 | 0,42 | 190 | 164 | 244 | 210 | 1,35355 | 0,95514 |
| OSCAR TONDO 900 | 946 | 80 | 95 | 900 | 1" | 1,99 | 0,41 | 175 | 151 | 223 | 193 | 1,34630 | 0,90160 |

* 1 Watt = 0,863 Kcal/h

The heat output is certified in according to the norm EN 442.



Example for a different ΔT from ΔT 50° C

If you need to know a radiator heat output (P) with different ΔT from Δt 50° C, use the following characteristic equation: $P = Km \cdot \Delta T^n$
 Example for the Oscar 1600 model with ΔT = 60° C:
 $P = 1,36136 \cdot 60^{1,35310} = 347$ Watt

Example of heat output readings with different ΔT from ΔT 50° C

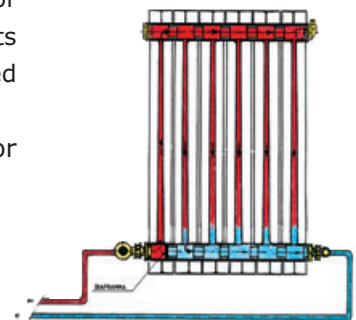
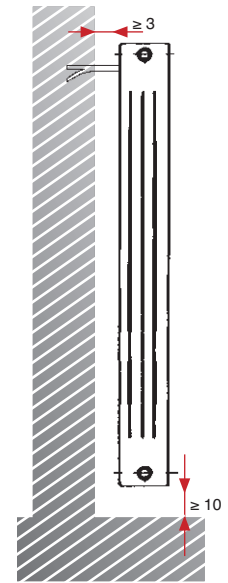
| Model | ΔT 20°C | ΔT 25°C | ΔT 30°C | ΔT 35°C | ΔT 40°C | ΔT 45°C | ΔT 50°C | ΔT 55°C | ΔT 60°C |
|------------------|---------|---------|---------|---------|---------|---------|------------|---------|---------|
| Oscar 2000 | 93 | 126 | 161 | 198 | 237 | 278 | 321 | 365 | 411 |
| Oscar 1800 | 86 | 116 | 148 | 183 | 219 | 257 | 297 | 337 | 379 |
| Oscar 1600 | 78 | 106 | 136 | 167 | 200 | 235 | 271 | 308 | 347 |
| Oscar 1400 | 71 | 96 | 123 | 151 | 181 | 213 | 245 | 279 | 314 |
| Oscar 1200 | 63 | 85 | 109 | 135 | 161 | 189 | 218 | 248 | 279 |
| Oscar 1000 | 55 | 75 | 95 | 118 | 141 | 165 | 190 | 217 | 244 |
| Oscar 900 | 51 | 69 | 88 | 108 | 129 | 152 | 175 | 199 | 223 |
| Oscar Tondo 2000 | 93 | 126 | 161 | 198 | 237 | 278 | 321 | 365 | 411 |
| Oscar Tondo 1800 | 86 | 116 | 148 | 183 | 219 | 257 | 297 | 337 | 379 |
| Oscar Tondo 1600 | 78 | 106 | 136 | 167 | 200 | 235 | 271 | 308 | 347 |
| Oscar Tondo 1400 | 71 | 96 | 123 | 151 | 181 | 213 | 245 | 279 | 314 |
| Oscar Tondo 1200 | 63 | 85 | 109 | 135 | 161 | 189 | 218 | 248 | 279 |
| Oscar Tondo 1000 | 55 | 75 | 95 | 118 | 141 | 165 | 190 | 217 | 244 |
| Oscar Tondo 900 | 51 | 69 | 88 | 108 | 129 | 152 | 175 | 199 | 223 |

GLOBAL radiators have a ten year guarantee starting from the date of manufacture.

This guarantee covers the replacement of those elements that because of manufacturing or material defects are not usable, but only on condition that installation has been executed in compliance with suitable regulations and correct installation.

correct installation

- The Oscar and Oscar Tondo radiators can be used in all hot water or vapour heating installations up to 110° C with a working pressure up to 600 K Pascal-6 bar.
- They can be installed in systems using iron, copper or thermoplastic pipes.
- The highest heat output can be obtained by mounting the radiators observing the following distances:
 - ≥ cm 3 from the wall
 - ≥ cm 10 from the floor
 - ≥ cm 10 from the shelf or windows-sillsTo avoid noise caused by thermal expansion the use of plastic sleeves on the brackets is recommended (artt. 4, 25, 27 or 29 in our catalogue).
- In order to protect the heating system against rust and corrosion, it is highly recommended to check the pH level of the water used (preferably between 6.5 and 8) and to introduce a suitable inhibitive additive, Cillit-HS 23 Al or similar, in a quantity equal to 1 litre to every 200 litres of water circulating in the system.
- We recommend the installation of automatic or manual air vent valves for radiators to ensure maximum efficiency.
- The interceptor valves should not be closed completely in order to prevent excessive pressure from building up in the system. It is recommended to install automatic air vent valves on each radiator if it is necessary to isolate one or more radiators from the circuit.
- To ensure lasting protection of the radiators, they should not be stored or installed in humid or damp environments. Paint bubbles on even small parts of the radiator could cause the aluminium to oxidise and the entire painted surface to flake away.
- It is advisable not to use abrasive products when cleaning the radiator surface.



important

If the aluminium radiators Oscar and Oscar Tondo are installed with bottom opposite end connections, it is advisable to insert a diverter (art. 22) between the first and second element. The inclusion of the diverter enhances circulation thereby guaranteeing maximum performance of the radiator.



accessories



1- Galvanized straight bracket



Square bracket
3- Galvanized
4- Plastic coated white



White or special colours
bracket with rawlplug
25- mm 170 (pair)
26- mm 195 for Ekos 130 and
double radiators (pair)



27- White universal bracket
blister (pair)



29- White square bracket
blister (pair)



15- White
adjustable feet



White side
panel for Oscar
61 - mod. 1000
62 - mod. 1200
63 - mod. 1400
64 - mod. 1600
65 - mod. 1800
66 - mod. 2000



Hanging peg
237- white
238- chrome



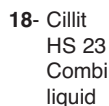
Towel rails
201 - cm 48 white
202 - cm 48 chrome
207 - cm 32 white
208 - cm 32 chrome



17- White marker
RAL 9010



10- White or
special colours
spray paint



18- Cillit
HS 23
Combi
liquid



White, chrome or special colours
reduction kit with silicon gasket

44- 3/8" for Oscar, Oscar Tondo
Ekos Plus, Junior
47- 1/2" for Oscar, Oscar Tondo
Ekos Plus, Junior
49- 3/4" for Oscar, Oscar Tondo
Ekos Plus, Junior



24- O-ring gasket for Oscar, Oscar Tondo
Junior, Ekos Plus radiators



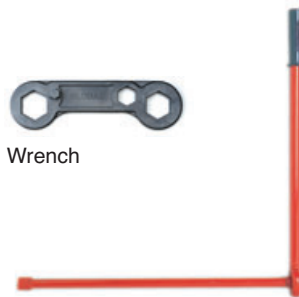
23- Nipples 1" mm 30 for
Oscar, Oscar Tondo
Ekos Plus radiators



22- Diverter for Oscar,
Oscar Tondo,
Ekos Plus radiators



19- Wrench



79- Assembly spanner lever
80- 500 mm assembly spanner
81- 800 mm assembly spanner



5- White plug or reduction
6- Galvanized plug or
reduction
20- White plug or reduction
with silicon gasket



13- 1" float air vent valve
right or left



Manual air vent valve
12- 1/8"
39- 1/4"
40- 3/8"



41- 1/2" white manual
air vent valve



42- 1/2" chrome automatic
air vent valve



38- 1/2" chrome manual
air vent valve

standard colour | special colours see colour card

cod. 10
white
RAL 9010

cod. 11
matt white
RAL 9016

cod. 01
oyster white
RAL 1013

cod. 05
beige sparkle
2589

cod. 06
quartz sparkle
2921

cod. 07
dark gray
2748

cod. 08
silver gray
2676

cod. 09
oxide brown
3112



GLOBAL di Fardelli Ottorino & C. s.r.l.

24060 ROGNO (BG) ITALIA • via Rondinera, 51

tel. ++39 035977111 • fax ++39 035977110

www.globalradiatori.it

info@globalradiatori.it