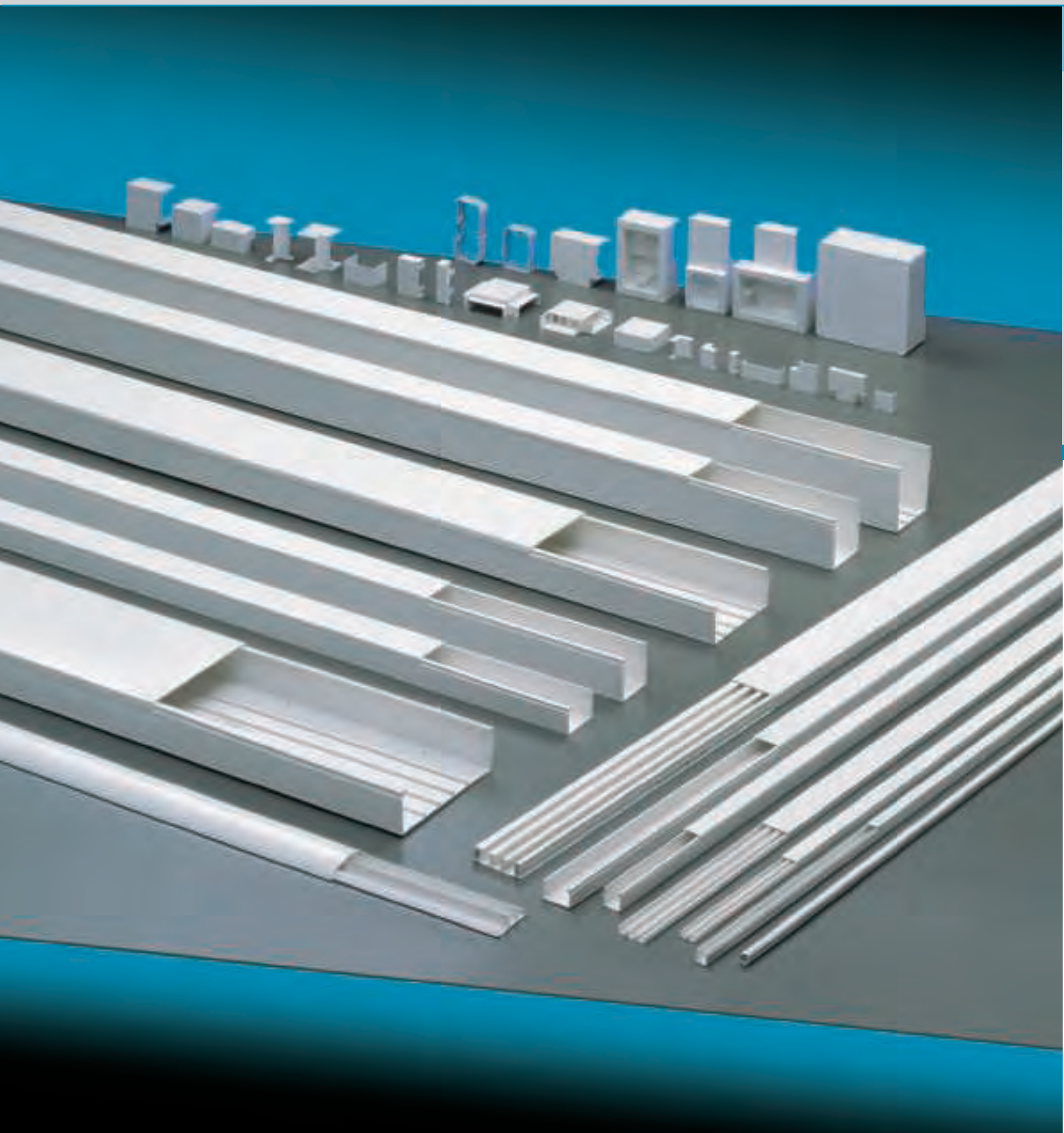


# CABLE TRUNKING SYSTEMS



## MAIN TECHNICAL FEATURES

Material: technopolymer on rigid PVC base, self-extinguishing V0 (UL94) and high resistant to UV rays.

Standard colours: white RAL 9001 and grey RAL 7030.

System protection degree: IP40 (trunking + cover).

Resistance to mechanical shocks IK 07 (shocks up to 2 j).

Resistance to heat in continuous use: up to +70° C.

Resistance to abnormal heat: up to 650° C (Glow Wire Test, Reference Standard IEC 695-2-1).

Insulation resistance > 100 MΩ.

Dielectric voltage > 3.000 V~.

Installation temperature range: minimum -5° C, maximum +60° C.

Standard length: 2mt bars.

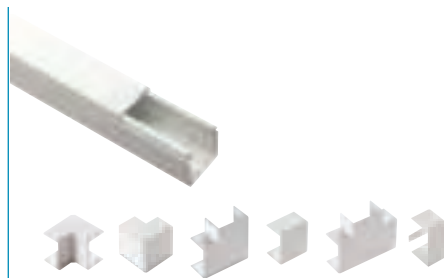
Reference Standards: EN 50085-1, EN 50085-2-1.

Products complying with the main requirements of the regulation B.T. 2006/96/CE.

Products complying with the regulation RoHS 2002/95/CE.



Cable trunkings Series CP  
Trunkings, separators, cable retainers  
page 60



Cable trunking systems device installation trunking  
systems Series CP - Trunkings and accessories  
page 64



Device installation trunking system Series KUADRA  
for standard devices 45x45mm  
page 79



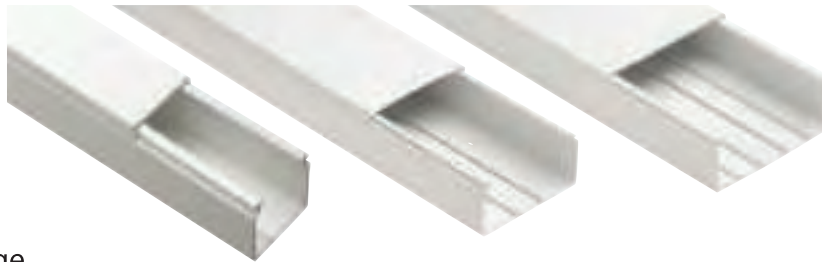
Cable trunkings Series CP  
DIN dimensions pitch 12,5mm  
page 82



Wall mounting modular enclosure IP40 white RAL 9001  
With transparent door Series 600  
page 83

## MAIN TECHNICAL FEATURES

Front-hooking cover without sharp edges, functional modern design



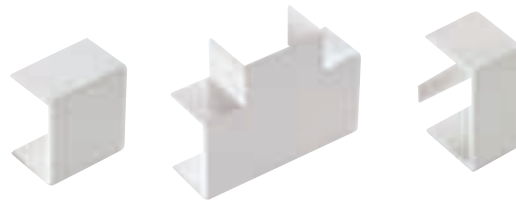
Perforated bottom for a quicker and more precise installation

Accessories for change of direction for any installation need



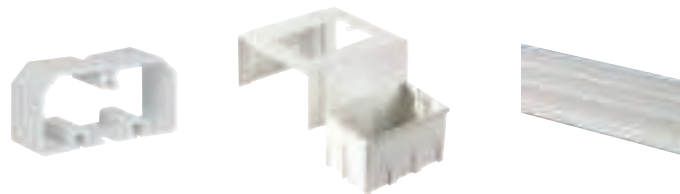
The cable trunkings can have 2, 3, 4 or 5 internal compartments for any distribution need

Cable retainers for a neat installation as well as a ceiling installation



The boxes for different devices and industrial sockets can serve as derivation boxes if closed with their cover

The separator has pre-cutting lines permitting to adjust it to the different trunking heights



Fully made of self-extinguishing technopolymer on PVC base and available in white RAL 9001 and in grey RAL 7030, the cable and device trunkings can be installed on the wall, on the ceiling and, thanks to proper support brackets, as gangway.

Starting from the dimension 80x40 one or more sectionable separators can be put into the bottom to obtain up to 4 different compartments, perfectly divided to permit to put, in the same

trunking, the wires of different electric circuits: power, phone, data transmission and other, without any risk of interferences or inappropriate overlapping, according to the Standard CEI 64-8. The derivation boxes have an appropriate grid allowing to keep the cables divided. The device boxes, equipped with a blank cover, can be also used as further junction boxes.

The several accessories for the change of direction, the derivation

boxes and the device boxes allow to put together a complete and functional distribution system.

The cable trunkings CP can be combined with skirting board and wall trunking system and the minitrunking system, as well as the modular enclosures manufactured in the same colour as the trunkings, in order to fulfill the installation and renovation needs with a compact elegant functional system.



mounting examples









## CABLE TRUNKINGS SERIES CP

### MAIN TECHNICAL FEATURES:

- Made of self-extinguishing technopolymer on rigid PVC base.
- Perforated bottom for fixing by screws or plugs.
- Accessories are set onto the trunking with a simple click.
- Protection degree IP 40 only if installed with the proper accessories.
- Standard bar length: 2m.
- Packed in strong cardboard boxes suitable for transport and storage.
- **Colour code: B = white, G = grey.**

CE

WHITE RAL 9001

IP 40

GREY RAL 7030

ITEM	EXTERNAL DIMENSIONS W x H mm	READY FOR SEPARATOR	SECTION AREA mm <sup>2</sup>	PACKAGING m
ECCP2540B	25x40	NO	760	100
ECCP2560B	25x60	NO	1100	70
ECCP2580B	25x80	NO	1520	56
ECCP4040B	40x40	NO	1214	70
ECCP4060B	40x60	NO	1950	56
ECCP4080B	40x80	NO	2530	40
ECCP40100B	40x100	NO	3110	32
ECCP5050B	50x50	NO	2076	24
ECCP6040B	60x40	NO	1930	50
ECCP6060B	60x60	NO	3046	32
ECCP6080B	60x80	NO	4215	36
ECCP60100B	60x100	NO	5332	24



## CABLE TRUNKINGS SERIES CP

### MAIN TECHNICAL FEATURES:

- Made of self-extinguishing technopolymer on rigid PVC base.
- Perforated bottom for fixing by screws or plugs.
- Accessories are set onto the trunking with a simple click.
- Protection degree IP 40 only if installed with the proper accessories.
- Standard bar length: 2m.
- Packed in strong cardboard boxes suitable for transport and storage.
- **Colour code: B = white, G = grey.**



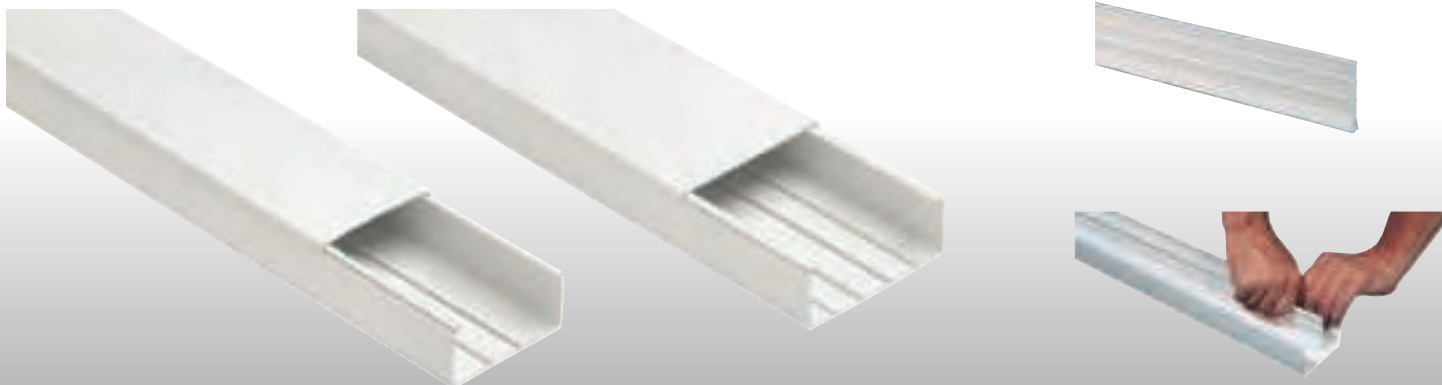
WHITE RAL 9001

**IP 40**



GREY RAL 7030

ITEM	EXTERNAL DIMENSIONS W x H mm	READY FOR SEPARATOR	SECTION AREA mm <sup>2</sup>	PACKAGING m
ECCP7550B	75x50	YES (2)	3125	40
ECCP8040B	80x40	YES (2)	2530	40
ECCP8060B	80x60	YES (2)	4202	28
ECCP8080B	80x80	YES (2)	5620	30
ECCP80100B	80x100	YES (2)	7064	24
ECCP10040B	100x40	YES (2)	3316	28
ECCP10060B	100x60	YES (2)	5236	20
ECCP10080B	100x80	YES (2)	7156	24
ECCP100100B	100x100	YES (2)	8980	16
ECCP12040B	120x40	YES (2)	4040	24
ECCP12060B	120x60	YES (2)	6340	20
ECCP12080B	120x80	YES (2)	8640	16
ECCP15060B	150x60	YES (4)	7738	16
ECCP20060B	200x60	YES (4)	10278	16
ECCP20080B	200x80	YES (4)	14278	12
ECSESB	40/60/80	SECTIONABLE SEPARATORS	-	50





## CABLE RETAINERS SERIES CO

### MAIN TECHNICAL FEATURES:

- Made of rigid nylon.
- Prevent the cables from falling off during the installation
- Can be fixed to the trunking by screws
- Cable retaining bars can be installed with a simple click.
- Can be used both in the cable trunkings and in the slotted trunkings.
- Cable retaining pieces and bars are recommended if the trunking is installed on the wall or on the ceiling.
- Packed in strong cardboard boxes suitable for transport and storage.



GREY RAL 7035

ITEM	TRUNKING DIMENSIONS W x H mm	DESCRIPTION	PACKAGING PIECES
<b>ECCO4040</b>	40x40	CABLE RETAINER	5/25
<b>ECCO4060</b>	40x60	CABLE RETAINER	5/25
<b>ECCO4080</b>	40x80	CABLE RETAINER	5/25
<b>ECCO40100</b>	40x100	CABLE RETAINER	5/25
<b>ECCO6040</b>	60x40	CABLE RETAINER	5/25
<b>ECCO6060</b>	60x60	CABLE RETAINER	5/25
<b>ECCO6080</b>	60x80	CABLE RETAINER	5/25
<b>ECCO60100</b>	60x100	CABLE RETAINER	5/25
<b>ECCO8040</b>	80x40	CABLE RETAINER	5/25
<b>ECCO8060</b>	80x60	CABLE RETAINER	5/25
<b>ECCO8080</b>	80x80	CABLE RETAINER	5/25
<b>ECCO80100</b>	80x100	CABLE RETAINER	5/25
<b>ECCO10040</b>	100x40	CABLE RETAINER	5/25
<b>ECCO10060</b>	100x60	CABLE RETAINER	5/25
<b>ECCO10080</b>	100x80	CABLE RETAINER	5/25
<b>ECCO100100</b>	100x100	CABLE RETAINER	5/25
<b>ECCO12040</b>	120x40	CABLE RETAINER	5/25
<b>ECCO12060</b>	120x60	CABLE RETAINER	5/25
<b>ECCO12080</b>	120x80	CABLE RETAINER	5/25
<b>ECCO150</b>	150x60	CABLE RETAINING BAR	5/25
<b>ECCO200</b>	200x60/80	CABLE RETAINING BAR	5/25



## COMPONENTS OF CABLE TRUNKING SYSTEMS

The cable trunking systems are composed of the trunking and accessories for the change of direction, the joining and the derivation, that, if correctly assembled and installed, form a system with protection degree IP40. The accessories for the change of direction are set directly on the trunking with a click.

CABLE TRUNKING WITH COVER

*MADE OF SELF-EXTINGUISHING TECHNO-POLYMER*



90° INTERNAL ANGLE FOR CHANGE OF DIRECTION



90° EXTERNAL ANGLE FOR CHANGE OF DIRECTION



90° FLAT ANGLE FOR CHANGE OF DIRECTION



STRAIGHT JOINT TO LINK 2 TRUNKING TRACKS



T JOINT FOR DERIVATIONS ON THE SAME LEVEL

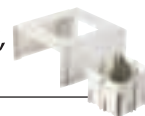


END CAP TO CLOSE STRAIGHT TRUNKING TRACKS



KIT ADAPTOR BOX HOLE CENTRE DISTANCE 60/70 mm

*TO INSTALL DEVICES FROM DIFFERENT STANDARDS OR SCHUKO SOCKETS THANKS TO THE DIFFERENT HOUSINGS, FOR 60 mm HIGH TRUNKINGS*



INSTALLATION KIT FOR DEVICES HOLE CENTRE DISTANCE 83,5 mm

*UP TO 3 ITALIAN STANDARD DEVICES FOR 60 mm HIGH TRUNKINGS*



BLANK COVER FOR BOX HOLE CENTRE DISTANCE 83,5 mm



INSTALLATION KIT FOR INDUSTRIAL SOCKETS

*TO INSTALL INDUSTRIAL SOCKETS IN 60 mm HIGH TRUNKINGS*



SEPARATION BOX FOR TRUNKINGS WITH SEVERAL COMPARTMENTS

*TO SEPARATE THE DIFFERENT ELECTRICAL CIRCUITS AND TO MAKE DERIVATIONS*



## CABLE TRUNKING SYSTEMS 40x40

### MAIN TECHNICAL FEATURES:

- Made of self-extinguishing technopolymer on rigid PVC base.
- Perforated bottom for fixing by screws or plugs.
- Accessories are set onto the trunking with a simple click.
- Standard bar length: 2m.
- Packed in strong cardboard boxes suitable for transport and storage.
- **Colour code: B = white, G = grey.**

CE

WHITE RAL 9001

IP 40

GREY RAL 7030

ITEM	DESCRIPTION	DIMENSIONS W x H mm	READY FOR SEPARATOR	PACKAGING m / PIECES
<b>ECCP4040B</b>	Cable trunking	40x40	NO	70 m
<b>ECAI4040B</b>	Internal angle	40x40	-	10/50 pcs
<b>ECAE4040B</b>	External angle	40x40	-	10/50 pcs
<b>ECAP4040B</b>	Flat angle	40x40	-	10/50 pcs
<b>ECGU4040B</b>	Straight joint	40x40	-	10/50 pcs
<b>ECT4040B</b>	T-joint	40x40	-	10/50 pcs
<b>ECTT4040B</b>	End cap	40x40	-	10/50 pcs
<b>ECSSB2</b>	Separation and derivation box	165x165x75	-	1/5 pcs



## CABLE TRUNKING SYSTEMS 60x40

### MAIN TECHNICAL FEATURES:

- Made of self-extinguishing technopolymer on rigid PVC base.
- Perforated bottom for fixing by screws or plugs.
- Accessories are set onto the trunking with a simple click.
- Standard bar length: 2m.
- Packed in strong cardboard boxes suitable for transport and storage.
- **Colour code: B = white, G = grey.**



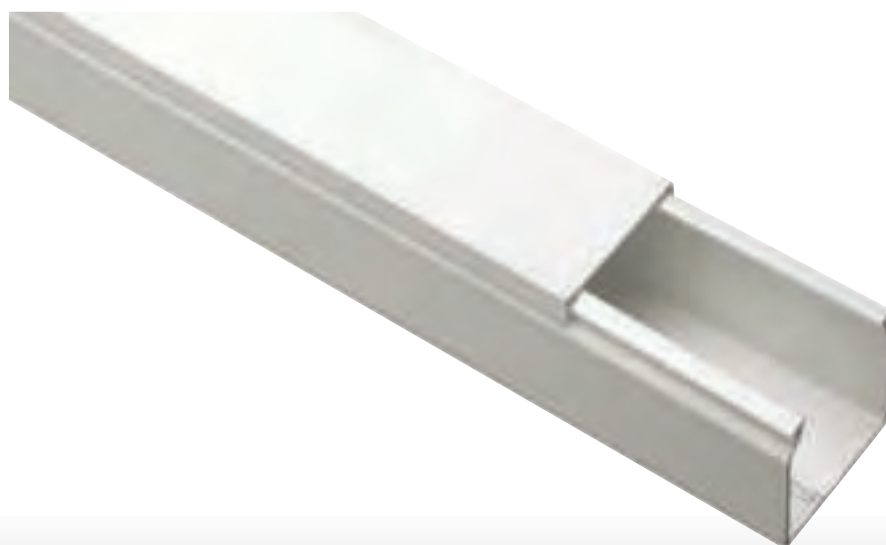
WHITE RAL 9001

**IP 40**



GREY RAL 7030

ITEM	DESCRIPTION	DIMENSIONS W x H mm	READY FOR SEPARATOR	PACKAGING m / PIECES
<b>ECCP6040B</b>	Cable trunking	60x40	NO	50 m
<b>ECAI6040B</b>	Internal angle	60x40	-	10/50 pcs
<b>ECAE6040B</b>	External angle	60x40	-	10/50 pcs
<b>ECAP6040B</b>	Flat angle	60x40	-	10/50 pcs
<b>ECGU6040B</b>	Straight joint	60x40	-	10/50 pcs
<b>ECT6040B</b>	T-joint	60x40	-	10/50 pcs
<b>ECTT6040B</b>	End cap	60x40	-	10/50 pcs
<b>ECSSB2</b>	Separation and derivation box	165x165x75	-	1/5 pcs





## CABLE TRUNKING SYSTEMS 60x60

### MAIN TECHNICAL FEATURES:

- Made of self-extinguishing technopolymer on rigid PVC base.
- Perforated bottom for fixing by screws or plugs.
- Accessories are set onto the trunking with a simple click.
- Standard bar length: 2m.
- Packed in strong cardboard boxes suitable for transport and storage.
- **Colour code: B = white, G = grey.**

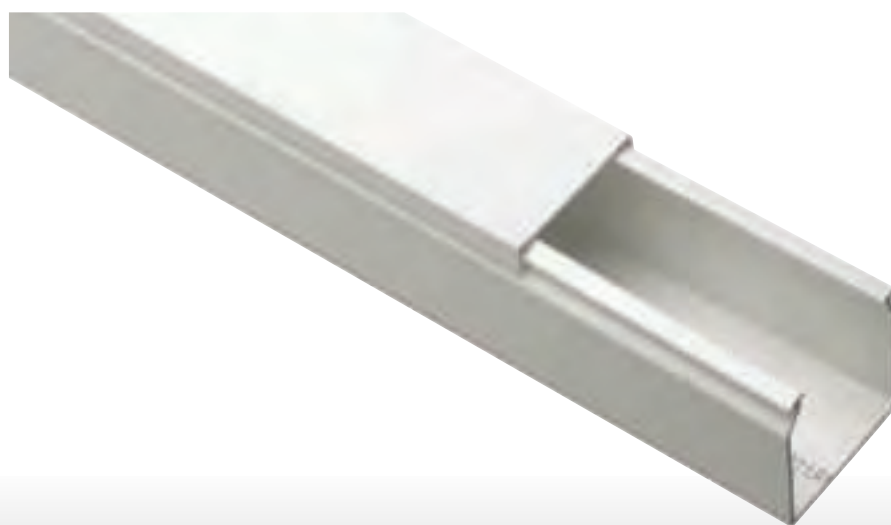
CE

WHITE RAL 9001

IP 40

GREY RAL 7030

ITEM	DESCRIPTION	DIMENSIONS W x H mm	READY FOR SEPARATOR	PACKAGING m / PIECES
<b>ECCP6060B</b>	Cable trunking	60x60	NO	32 m
<b>ECAI6060B</b>	Internal angle	60x60	-	-/10 pcs
<b>ECAE6060B</b>	External angle	60x60	-	-/10 pcs
<b>ECAP6060B</b>	Flat angle	60x60	-	-/10 pcs
<b>ECGU6060B</b>	Straight joint	60x60	-	-/20 pcs
<b>ECT6060B</b>	T-joint	60x60	-	-/10 pcs
<b>ECTT6060B</b>	End cap	60x60	-	-/20 pcs
<b>ECSSB2</b>	Separation and derivation box	165x165x75	-	1/5 pcs



## CABLE TRUNKING SYSTEMS 80x40

### MAIN TECHNICAL FEATURES:

- Made of self-extinguishing technopolymer on rigid PVC base.
- Perforated bottom for fixing by screws or plugs.
- Accessories are set onto the trunking with a simple click.
- Standard bar length: 2m.
- Packed in strong cardboard boxes suitable for transport and storage.
- **Colour code: B = white, G = grey.**



WHITE RAL 9001

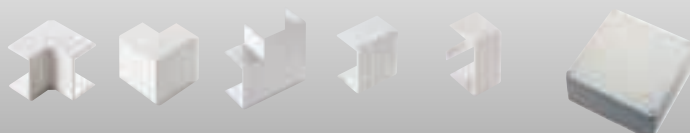
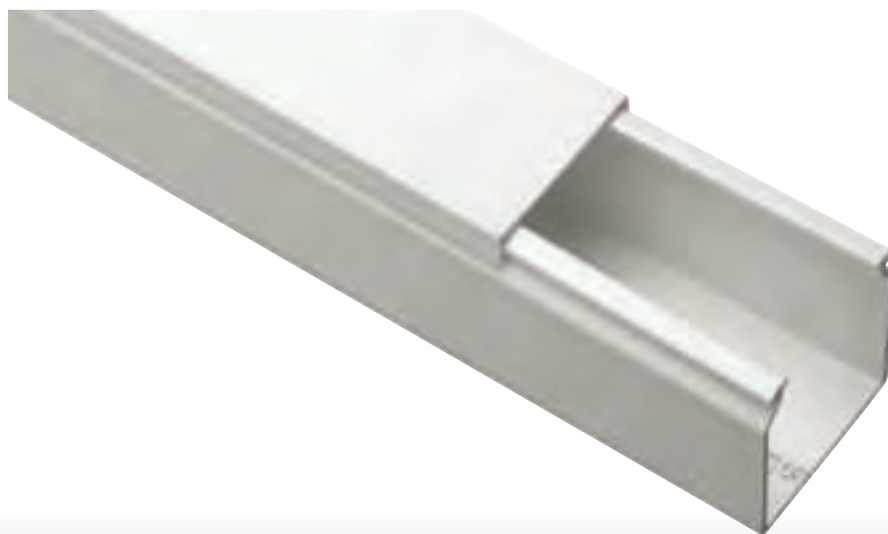
**IP 40**



GREY RAL 7030

ITEM	DESCRIPTION	DIMENSIONS W x H mm	READY FOR SEPARATOR	PACKAGING m / PIECES
<b>ECCP8040B</b>	Cable trunking	80x40	YES (2)	40 m
<b>ECAI8040B</b>	Internal angle	80x40	-	-/10 pcs
<b>ECAE8040B</b>	External angle	80x40	-	-/10 pcs
<b>ECAP8040B</b>	Flat angle	80x40	-	-/10 pcs
<b>ECGU8040B</b>	Straight joint	80x40	-	-/20 pcs
<b>ECTT8040B</b>	End cap	80x40	-	-/20 pcs
<b>ECSSB2</b>	Separation and derivation box	165x165x75	-	1/5 pcs

T joint is obtained by straight joint "GU"



## CABLE TRUNKING SYSTEMS 80x60

### MAIN TECHNICAL FEATURES:

- Made of self-extinguishing technopolymer on rigid PVC base.
- Perforated bottom for fixing by screws or plugs.
- Accessories are set onto the trunking with a simple click.
- Standard bar length: 2m.
- Packed in strong cardboard boxes suitable for transport and storage.
- **Colour code: B = white, G = grey.**

CE

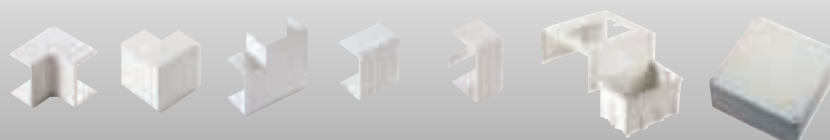
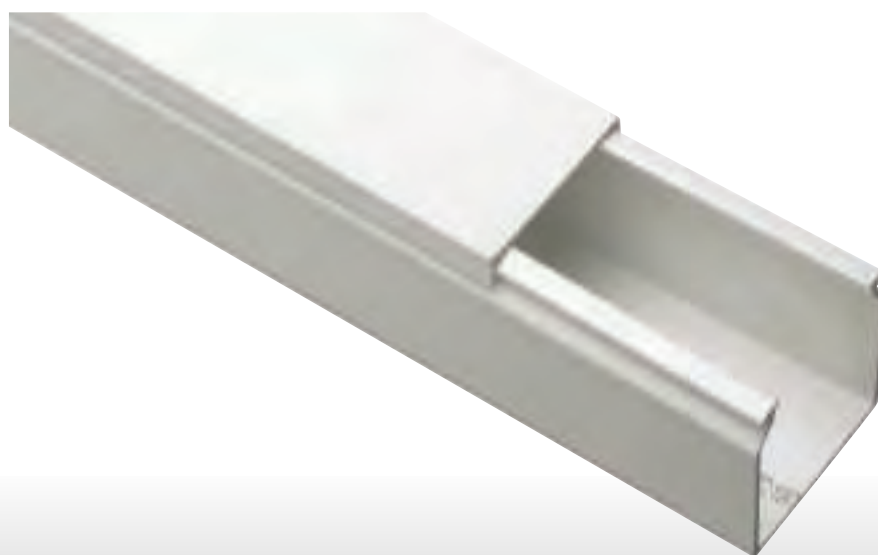
WHITE RAL 9001

IP 40

GREY RAL 7030

ITEM	DESCRIPTION	DIMENSIONS W x H mm	READY FOR SEPARATOR	PACKAGING m / PIECES
<b>ECCP8060B</b>	Cable trunking	80x60	YES (2)	28 m
<b>ECAI8060B</b>	Internal angle	80x60	-	-/10 pcs
<b>ECAE8060B</b>	External angle	80x60	-	-/10 pcs
<b>ECAP8060B</b>	Flat angle	80x60	-	-/10 pcs
<b>ECGU8060B</b>	Straight joint	80x60	-	-/20 pcs
<b>ECTT8060B</b>	End cap	80x60	-	-/20 pcs
<b>ECKIT80B</b>	Installation kit for 3 Italian devices - 83,5 mm	80x60	-	1/10 pcs
<b>ECCPB</b>	Blank cover for box hole centre distance 83,5 mm	120x83x5	-	5/50 pcs
<b>ECSSB2</b>	Separation and derivation box	165x165x75	-	1/5 pcs

T joint is obtained by straight joint "GU"



## CABLE TRUNKING SYSTEMS 80x80

### MAIN TECHNICAL FEATURES:

- Made of self-extinguishing technopolymer on rigid PVC base.
- Perforated bottom for fixing by screws or plugs.
- Accessories are set onto the trunking with a simple click.
- Standard bar length: 2m.
- Packed in strong cardboard boxes suitable for transport and storage.
- **Colour code: B = white, G = grey.**



WHITE RAL 9001

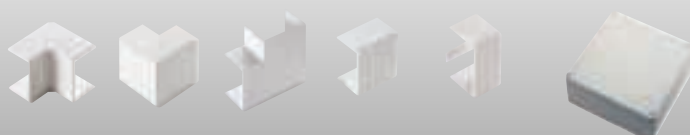
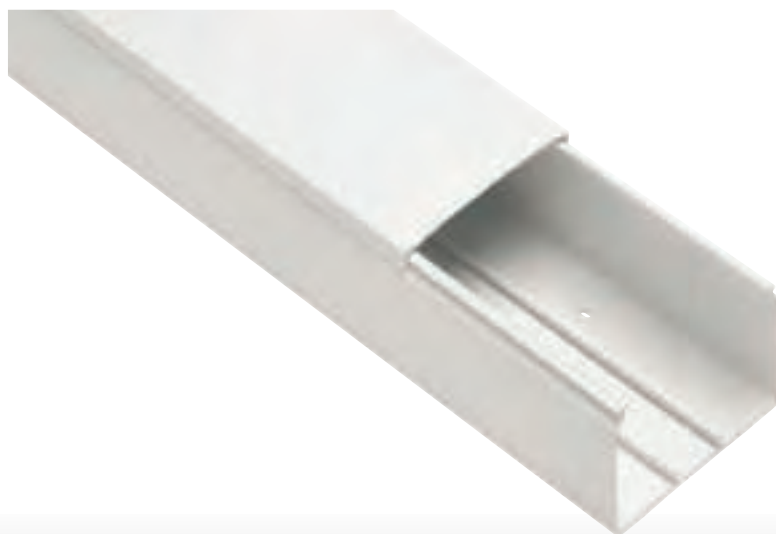
**IP 40**



GREY RAL 7030

ITEM	DESCRIPTION	DIMENSIONS W x H mm	READY FOR SEPARATOR	PACKAGING m / PIECES
<b>ECCP8080B</b>	Cable trunking	80x80	YES (2)	30 m
<b>ECAI8080B</b>	Internal angle	80x80	-	-/10 pcs
<b>ECAE8080B</b>	External angle	80x80	-	-/10 pcs
<b>ECAP8080B</b>	Flat angle	80x80	-	-/10 pcs
<b>ECGU8080B</b>	Straight joint	80x80	-	-/20 pcs
<b>ECTT8080B</b>	End cap	80x80	-	-/20 pcs
<b>ECSSB3</b>	Separation and derivation box	250x250x100	-	1/4 pcs

T joint is obtained by straight joint "GU"





## CABLE TRUNKING SYSTEMS 100x40

### MAIN TECHNICAL FEATURES:

- Made of self-extinguishing technopolymer on rigid PVC base.
- Perforated bottom for fixing by screws or plugs.
- Accessories are set onto the trunking with a simple click.
- Standard bar length: 2m.
- Packed in strong cardboard boxes suitable for transport and storage.
- **Colour code: B = white, G = grey.**

CE

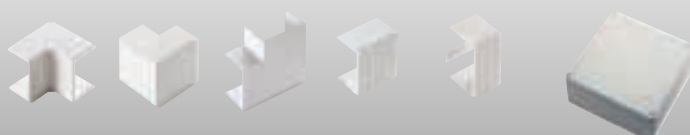
WHITE RAL 9001

IP 40

GREY RAL 7030

ITEM	DESCRIPTION	DIMENSIONS W x H mm	READY FOR SEPARATOR	PACKAGING m / PIECES
ECCP10040B	Cable trunking	100x40	YES (2)	28 m
ECAI10040B	Internal angle	100x40	-	-/10 pcs
ECAE10040B	External angle	100x40	-	-/10 pcs
ECAP10040B	Flat angle	100x40	-	-/10 pcs
ECGU10040B	Straight joint	100x40	-	-/20 pcs
ECTT10040B	End cap	100x40	-	-/20 pcs
ECSSB2	Separation and derivation box	165x165x75	-	1/5 pcs

T joint is obtained by straight joint "GU"



## CABLE TRUNKING SYSTEMS 100x60

### MAIN TECHNICAL FEATURES:

- Made of self-extinguishing technopolymer on rigid PVC base.
- Perforated bottom for fixing by screws or plugs.
- Accessories are set onto the trunking with a simple click.
- Standard bar length: 2m.
- Packed in strong cardboard boxes suitable for transport and storage.
- **Colour code: B = white, G = grey.**



WHITE RAL 9001

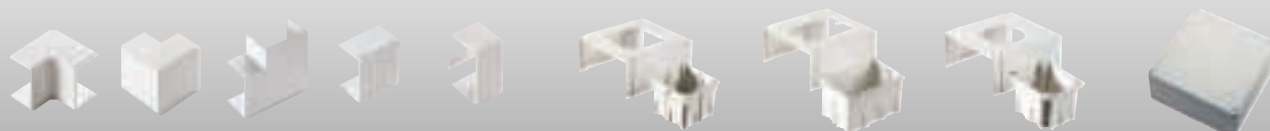
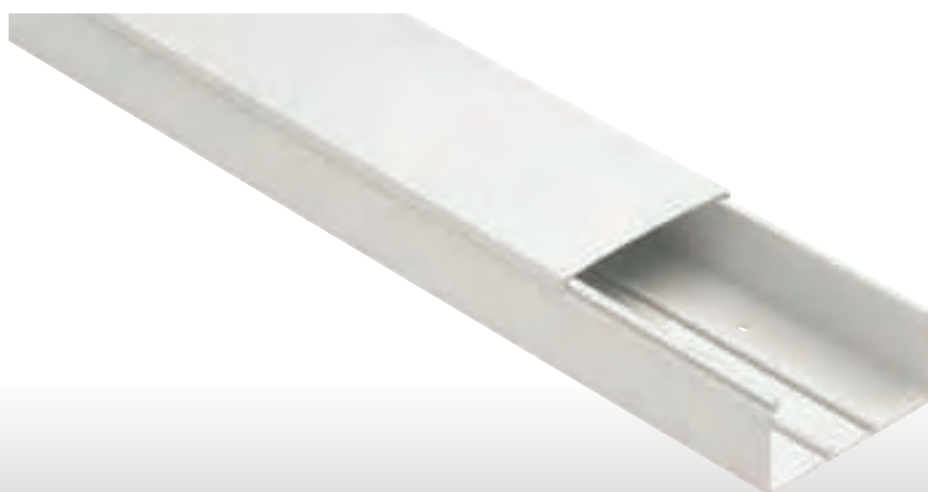
**IP 40**



GREY RAL 7030

ITEM	DESCRIPTION	DIMENSIONS W x H mm	READY FOR SEPARATOR	PACKAGING m / PIECES
<b>ECCP10060B</b>	Cable trunking	100x60	YES (2)	20 m
<b>ECAI10060B</b>	Internal angle	100x60	-	-/10 pcs
<b>ECAE10060B</b>	External angle	100x60	-	-/10 pcs
<b>ECAP10060B</b>	Flat angle	100x60	-	-/10 pcs
<b>ECGU10060B</b>	Straight joint	100x60	-	-/20 pcs
<b>ECTT10060B</b>	End cap	100x60	-	-/20 pcs
<b>ECKIT100A</b>	Kit adaptor box hole centre distance 60/67 mm	100x60	-	1/10 pcs
<b>ECKIT100B</b>	Installation kit for 3 Italian devices - 83,5 mm	100x60	-	1/10 pcs
<b>ECCPB</b>	Blank cover for box hole centre distance 83,5 mm	120x83x5	-	5/50 pcs
<b>ECKIT100C</b>	Kit for industrial sockets	100x60	-	1/10 pcs
<b>ECSSB2</b>	Separation and derivation box	165x165x75	-	1/5 pcs

T joint is obtained by straight joint "GU"



## CABLE TRUNKING SYSTEMS 100x80

### MAIN TECHNICAL FEATURES:

- Made of self-extinguishing technopolymer on rigid PVC base.
- Perforated bottom for fixing by screws or plugs.
- Accessories are set onto the trunking with a simple click.
- Standard bar length: 2m.
- Packed in strong cardboard boxes suitable for transport and storage.
- **Colour code: B = white, G = grey.**

CE

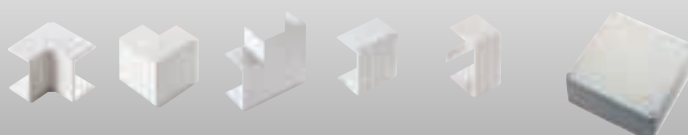
WHITE RAL 9001

IP 40

GREY RAL 7030

ITEM	DESCRIPTION	DIMENSIONS W x H mm	READY FOR SEPARATOR	PACKAGING m / PIECES
ECCP10080B	Cable trunking	100x80	YES (2)	24 m
ECAI10080B	Internal angle	100x80	-	-/10 pcs
ECAE10080B	External angle	100x80	-	-/10 pcs
ECAP10080B	Flat angle	100x80	-	-/10 pcs
ECGU10080B	Straight joint	100x80	-	-/20 pcs
ECTT10080B	End cap	100x80	-	-/20 pcs
ECSSB3	Separation and derivation box	250x250x100	-	1/4 pcs

T joint is obtained by straight joint "GU"



## CABLE TRUNKING SYSTEMS 120x40

### MAIN TECHNICAL FEATURES:

- Made of self-extinguishing technopolymer on rigid PVC base.
- Perforated bottom for fixing by screws or plugs.
- Accessories are set onto the trunking with a simple click.
- Standard bar length: 2m.
- Packed in strong cardboard boxes suitable for transport and storage.
- **Colour code: B = white, G = grey.**



WHITE RAL 9001

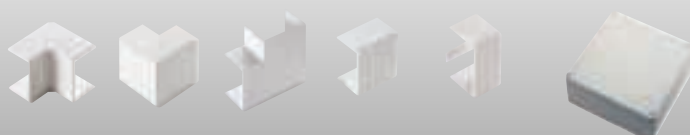
**IP 40**



GREY RAL 7030

ITEM	DESCRIPTION	DIMENSIONS W x H mm	READY FOR SEPARATOR	PACKAGING m / PIECES
<b>ECCP12040B</b>	Cable trunking	120x40	YES (2)	24 m
<b>ECAI12040B</b>	Internal angle	120x40	-	-/10 pcs
<b>ECAE12040B</b>	External angle	120x40	-	-/10 pcs
<b>ECAP12040B</b>	Flat angle	120x40	-	-/10 pcs
<b>ECGU12040B</b>	Straight joint	120x40	-	-/20 pcs
<b>ECTT12040B</b>	End cap	120x40	-	-/20 pcs
<b>ECSSB2</b>	Separation and derivation box	165x165x75	-	1/5 pcs

T joint is obtained by straight joint "GU"





## CABLE TRUNKING SYSTEMS 120x60

### MAIN TECHNICAL FEATURES:

- Made of self-extinguishing technopolymer on rigid PVC base.
- Perforated bottom for fixing by screws or plugs.
- Accessories are set onto the trunking with a simple click.
- Standard bar length: 2m.
- Packed in strong cardboard boxes suitable for transport and storage.
- **Colour code: B = white, G = grey.**

CE

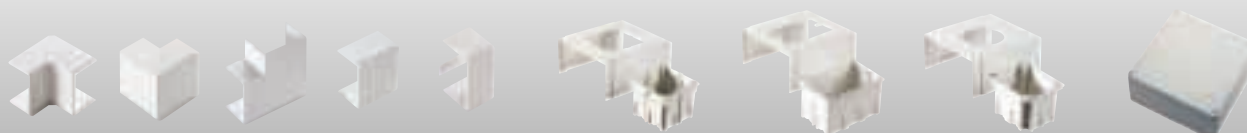
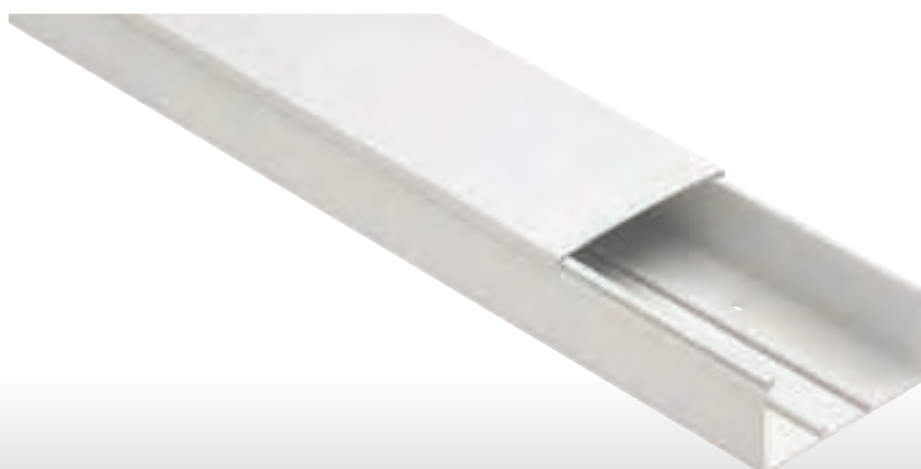
WHITE RAL 9001

IP 40

GREY RAL 7030

ITEM	DESCRIPTION	DIMENSIONS W x H mm	READY FOR SEPARATOR	PACKAGING m / PIECES
<b>ECCP12060B</b>	Cable trunking	120x60	YES (2)	20 m
<b>ECAI12060B</b>	Internal angle	120x60	-	-/10 pcs
<b>ECAE12060B</b>	External angle	120x60	-	-/10 pcs
<b>ECAP12060B</b>	Flat angle	120x60	-	-/10 pcs
<b>ECGU12060B</b>	Straight joint	120x60	-	-/10 pcs
<b>ECTT12060B</b>	End cap	120x60	-	-/20 pcs
<b>ECKIT120A</b>	Kit adaptor box hole centre distance 60/67mm	120x60	-	1/10 pcs
<b>ECKIT120B</b>	Installation kit for 3 Italian devices - 83,5 mm	120x60	-	1/10 pcs
<b>ECCPB</b>	Blank cover for box hole centre distance 83,5 mm	120x83x5	-	5/50 pcs
<b>ECKIT120C</b>	Kit for industrial sockets	120x60	-	1/10 pcs
<b>ECSSB2</b>	Separation and derivation box	165x165x75	-	1/5 pcs

T joint is obtained by straight joint "GU"



## CABLE TRUNKING SYSTEMS 120x80

### MAIN TECHNICAL FEATURES:

- Made of self-extinguishing technopolymer on rigid PVC base.
- Perforated bottom for fixing by screws or plugs.
- Accessories are set onto the trunking with a simple click.
- Standard bar length: 2m.
- Packed in strong cardboard boxes suitable for transport and storage.
- **Colour code: B = white, G = grey.**



WHITE RAL 9001

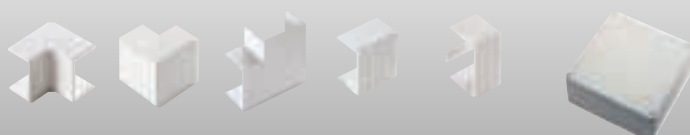
**IP 40**



GREY RAL 7030

ITEM	DESCRIPTION	DIMENSIONS W x H mm	READY FOR SEPARATOR	PACKAGING m / PIECES
<b>ECCP12080B</b>	Cable trunking	120x80	YES (2)	16 m
<b>ECAI12080B</b>	Internal angle	120x80	-	-/10 pcs
<b>ECAE12080B</b>	External angle	120x80	-	-/10 pcs
<b>ECAP12080B</b>	Flat angle	120x80	-	-/8 pcs
<b>ECGU12080B</b>	Straight joint	120x80	-	-/10 pcs
<b>ECTT12080B</b>	End cap	120x80	-	-/20 pcs
<b>ECSSB3</b>	Separation and derivation box	250x250x100	-	1/4 pcs

T joint is obtained by straight joint "GU"



## CABLE TRUNKING SYSTEMS 150x60

### MAIN TECHNICAL FEATURES:

- Made of self-extinguishing technopolymer on rigid PVC base.
- Perforated bottom for fixing by screws or plugs.
- Accessories are set onto the trunking with a simple click.
- Standard bar length: 2m.
- Packed in strong cardboard boxes suitable for transport and storage.
- **Colour code: B = white, G = grey.**



WHITE RAL 9001

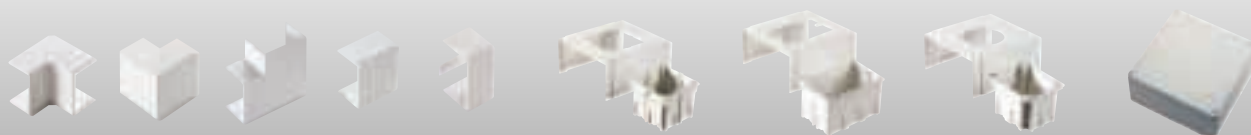
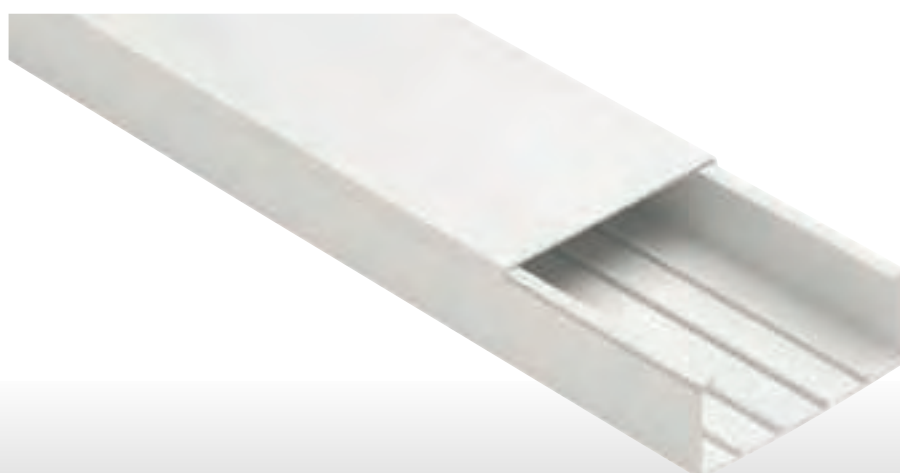
**IP 40**



GREY RAL 7030

ITEM	DESCRIPTION	DIMENSIONS W x H mm	READY FOR SEPARATOR	PACKAGING m / PIECES
<b>ECCP15060B</b>	Cable trunking	150x60	YES (4)	16 m
<b>ECAI15060B</b>	Internal angle	150x60	-	-/8 pcs
<b>ECAE15060B</b>	External angle	150x60	-	-/8 pcs
<b>ECAP15060B</b>	Flat angle	150x60	-	-/8 pcs
<b>ECGU15060B</b>	Straight joint	150x60	-	-/10 pcs
<b>ECTT15060B</b>	End cap	150x60	-	-/10 pcs
<b>ECKIT150A</b>	Kit adaptor box hole centre distance 60/67 mm	150x60	-	1/5 pcs
<b>ECKIT150B</b>	Installation kit for 3 Italian devices - 83,5 mm	150x60	-	1/5 pcs
<b>ECCPB</b>	Blank cover for box hole centre distance 83,5 mm	120x83x5	-	5/50 pcs
<b>ECKIT150C</b>	Kit for industrial sockets	150x60	-	1/5 pcs
<b>ECSSB3</b>	Separation and derivation box	250x250x100	-	1/4 pcs

T joint is obtained by straight joint "GU"



## CABLE TRUNKING SYSTEMS 200x60

### MAIN TECHNICAL FEATURES:

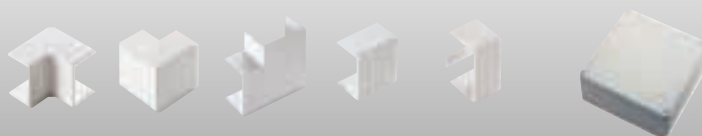
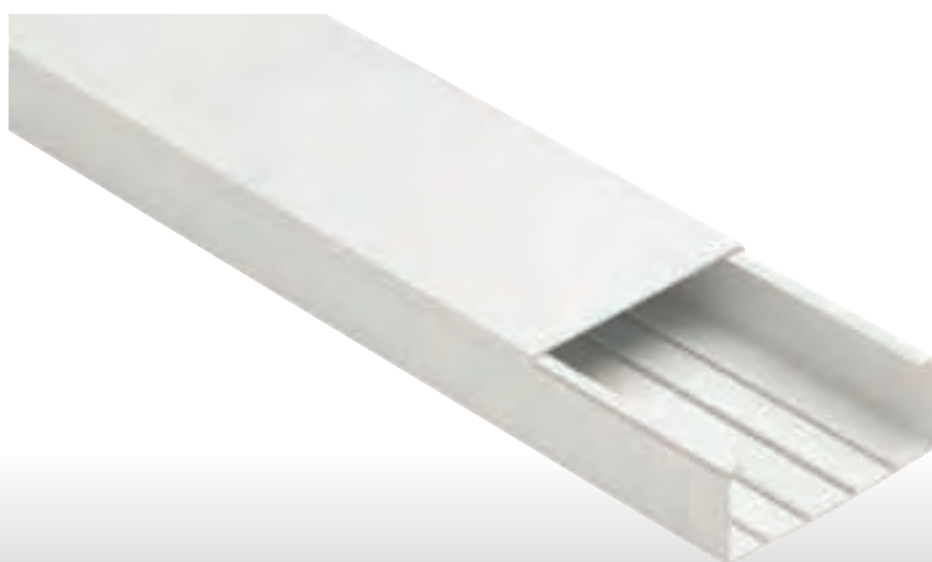
- Made of self-extinguishing technopolymer on rigid PVC base.
- Perforated bottom for fixing by screws or plugs.
- Accessories are set onto the trunking with a simple click.
- Standard bar length: 2m.
- Packed in strong cardboard boxes suitable for transport and storage.
- **Colour code: B = white, G = grey.**



**IP 40**



ITEM	DESCRIPTION	DIMENSIONS W x H mm	READY FOR SEPARATOR	PACKAGING m / PIECES
<b>ECCP20060B</b>	Cable trunking	200x60	YES (4)	16 m
<b>ECAI20060B</b>	Internal angle	200x60	-	-/5 pcs
<b>ECAE20060B</b>	External angle	200x60	-	-/4 pcs
<b>ECAP20060B</b>	Flat angle	200x60	-	-/8 pcs
<b>ECGU20060B</b>	Straight joint	200x60	-	-/10 pcs
<b>ECTT20060B</b>	End cap	200x60	-	-/10 pcs
<b>ECSSB3</b>	Separation and derivation box	250x250x100	-	1/4 pcs



## CABLE TRUNKING SYSTEMS 200x80

### MAIN TECHNICAL FEATURES:

- Made of self-extinguishing technopolymer on rigid PVC base.
- Perforated bottom for fixing by screws or plugs.
- Accessories are set onto the trunking with a simple click.
- Standard bar length: 2m.
- Packed in strong cardboard boxes suitable for transport and storage.
- **Colour code: B = white, G = grey.**

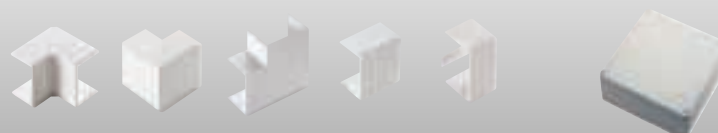
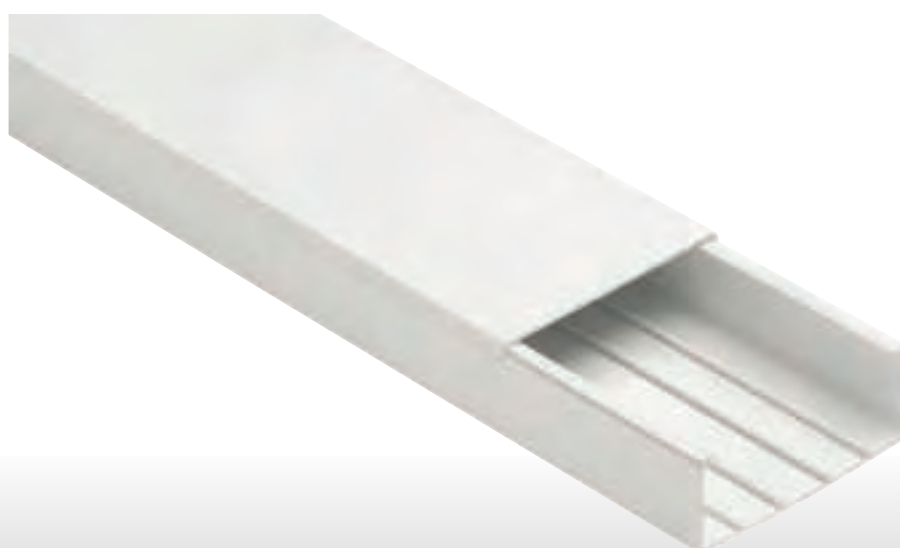
CE

WHITE RAL 9001

IP 40

GREY RAL 7030

ITEM	DESCRIPTION	DIMENSIONS W x H mm	READY FOR SEPARATOR	PACKAGING m / PIECES
<b>ECCP20080B</b>	Cable trunking	200x80	YES (4)	12 m
<b>ECAI20080B</b>	Internal angle	200x80	-	-/5 pcs
<b>ECAE20080B</b>	External angle	200x80	-	-/4 pcs
<b>ECAP20080B</b>	Flat angle	200x80	-	-/6 pcs
<b>ECGU20080B</b>	Straight joint	200x80	-	-/10 pcs
<b>ECTT20080B</b>	End cap	200x80	-	-/10 pcs
<b>ECSSB3</b>	Separation and derivation box	250x250x100	-	1/4 pcs



## 45x45 mm DEVICE INSTALLATION TRUNKING SYSTEM **SERIES KUADRA**

### MAIN TECHNICAL FEATURES:

- 45x45 mm device installation trunking – 1 compartment.
- Made of self-extinguishing technopolymer on rigid PVC base.
- Shock resistance: IK 08 (shocks up to 6j).
- Perforated bottom for fixing by screws or plugs.
- Accessories are set onto the trunking with a simple click.
- Protection degree IP 40 only if installed with the proper accessories.
- Standard bar length: 2m.
- Packed in strong cardboard boxes suitable for transport and storage.



**IP 40**



## Trunking 90x55 - for cables and 45x45 mm standard devices

ITEM	DESCRIPTION - SECTION AREA	DIMENSIONS W x H mm	READY FOR SEPARATOR	PACKAGING m / PIECES
<b>EC2209055</b>	Trunking and cover 1 compartment - 4.003 mm <sup>2</sup>	90x55	YES (2)	24 m
<b>EC220AI9055</b>	Variable internal angle	90x55	-	1/10 pcs
<b>EC220AE9055</b>	Variable external angle	90x55	-	1/10 pcs
<b>EC220AP9055</b>	Flat angle	90x55	-	1/10 pcs
<b>EC220GU9055</b>	Straight joint	-	-	10/50 pcs
<b>EC220GC45</b>	Cover joint	45	-	5/50 pcs
<b>EC220GA45</b>	Cover/ Device joint	45	-	5/50 pcs
<b>EC220TT9055</b>	End cap	90x55	-	2/10 pcs
<b>ECSSB2</b>	Separation and derivation box	165x165x75	-	1/5 pcs
<b>ECSESB</b>	Separator	-	-	50 m
<b>EC220CC45</b>	Additional cover	45	-	50 m
<b>EC220CC25</b>	Bottom cover for double insulation	25x100	-	50 pcs





## 45x45 mm DEVICE INSTALLATION TRUNKING SYSTEM **SERIES KUADRA**

### MAIN TECHNICAL FEATURES:

- 45x45 mm device installation trunking – 2 compartments.
- Made of self-extinguishing technopolymer on rigid PVC base.
- Shock resistance: IK 08 (shocks up to 6j).
- Perforated bottom for fixing by screws or plugs.
- Accessories are set onto the trunking with a simple click.
- Protection degree IP 40 only if installed with the proper accessories.
- Standard bar length: 2m.
- Packed in strong cardboard boxes suitable for transport and storage.



**IP 40**



## Trunking 135x55 with 2 compartments - for cables and 45x45 mm standard devices

ITEM	DESCRIPTION - SECTION AREA	DIMENSIONS W x H mm	READY FOR SEPARATOR	PACKAGING m / PIECES
<b>EC22013555-2</b>	Trunking and cover 2 compartment - 6.193 mm <sup>2</sup>	135x55	YES (4)	16 m
<b>EC220AI13555</b>	Variable internal angle	135x55	-	1/10 pcs
<b>EC220AE13555</b>	Variable external angle	135x55	-	1/8 pcs
<b>EC220AP13555</b>	Flat angle	135x55	-	1/8 pcs
<b>EC220GU9055</b>	Straight joint	-	-	10/50 pcs
<b>EC220GC45</b>	Cover joint	45	-	5/50 pcs
<b>EC220GA45</b>	Cover/ Device joint	45	-	5/50 pcs
<b>EC220TT13555</b>	End cap	135x55	-	2/10 pcs
<b>ECSSB3</b>	Separation and derivation box	250x250x100	-	1/4 pcs
<b>ECSESB</b>	Separator	-	-	50 m
<b>EC220CC45</b>	Additional cover	45	-	50 m
<b>EC220CC25</b>	Bottom cover for double insulation	25x100	-	50 pcs



**KUADRA  
SYSTEM**

## 45x45 mm DEVICE INSTALLATION TRUNKING SYSTEM **SERIES KUADRA**

### MAIN TECHNICAL FEATURES:

- 45x45 mm device installation trunking – 3 compartments.
- Made of self-extinguishing technopolymer on rigid PVC base.
- Shock resistance: IK 08 (shocks up to 6j).
- Perforated bottom for fixing by screws or plugs.
- Accessories are set onto the trunking with a simple click.
- Protection degree IP 40 only if installed with the proper accessories.
- Standard bar length: 2m.
- Packed in strong cardboard boxes suitable for transport and storage.



**IP 40**



## Trunking 165x55 with 3 compartments - for cables and 45x45 mm standard devices

ITEM	DESCRIPTION - SECTION AREA	DIMENSIONS W x H mm	READY FOR SEPARATOR	PACKAGING m / PIECES
<b>EC22016555-3</b>	Trunking and cover 3 compartments - 7.544 mm <sup>2</sup>	165x55	YES (6)	16 m
<b>EC220AI16555</b>	Variable internal angle	165x55	-	1/10 pcs
<b>EC220AE16555</b>	Variable external angle	165x55	-	1/8 pcs
<b>EC220AP16555</b>	Flat angle	165x55	-	1/8 pcs
<b>EC220GU16555</b>	Straight joint	165x55	-	10/50 pcs
<b>EC220GC45</b>	Cover joint	45	-	5/50 pcs
<b>EC220GA45</b>	Cover/ Device joint	45	-	5/50 pcs
<b>EC220TT16555</b>	End cap	165x55	-	2/10 pcs
<b>ECSSB3</b>	Separation and derivation box	250x250x100	-	1/4 pcs
<b>ECSESB</b>	Separator	-	-	50 m
<b>EC220CC45</b>	Additional cover	45	-	50 m
<b>EC220CC25</b>	Bottom cover for double insulation	25x100	-	50 pcs



## CABLE TRUNKING SYSTEMS DIN PITCH 12,5 mm **SERIES CP**

### BRACKET SUPPORTS **SERIES M**

#### MAIN TECHNICAL FEATURES OF THE TRUNKINGS:

- Made of self-extinguishing technopolymer on rigid PVC base.
- Perforated bottom for fixing by screws or plugs.
- Dimensions of DIN pitch 12,5 mm.
- Standard bar length: 2m.
- Packed in strong cardboard boxes suitable for transport and storage.
- **Colour code: B = white, G = grey.**

#### MAIN TECHNICAL FEATURES OF THE BRACKET SUPPORTS:

- Made of polycarbonate with high resistance to break.
- Max. load kg 30 at 20°C, fixing holes for a quick installation
- Packed in strong cardboard boxes suitable for transport and storage.

CE

WHITE RAL 9001

**IP 40**

GREY RAL 7030

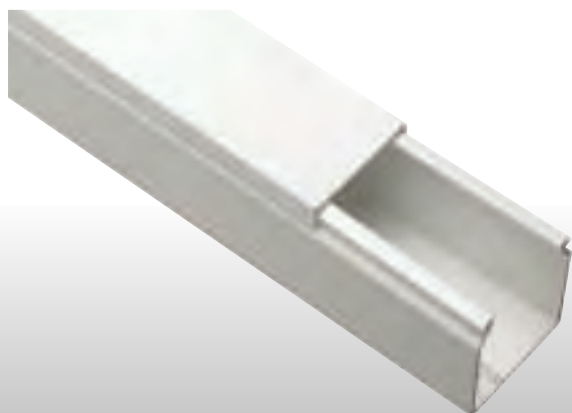
## Cable trunkings DIN pitch 12,5 mm

ITEM	EXTERNAL DIMENSIONS W x H mm	READY FOR SEPARATOR	SECTION AREA mm <sup>2</sup>	PACKAGING m
<b>ECCP5050B</b>	50x50	NO	2076	24
<b>ECCP7550B</b>	75x50	YES (2)	3125	40
<b>ECCP5050G</b>	50x50	NO	2076	24
<b>ECCP7550G</b>	75x50	YES (2)	3125	40

## Bracket supports

ITEM	DESCRIPTION	DIMENSIONS mm	PACKAGING PIECES
<b>ECM12</b>	Trunking support	100	100
<b>ECM20</b>	Trunking support	200	50
<b>ECM30</b>	Trunking support	300	20

#### To install the trunkings as gangway



## WALL MOUNTING WHITE MODULAR ENCLOSURES SERIES 600

### MAIN TECHNICAL FEATURES:

- Reversible door made of smoky grey polycarbonate.
- Suitable for housing the brass terminals.
- Suitable for plumbing of the cover.
- Galvanized steel DIN rail already mounted.
- Lid for unused modules.
- Self-adhesive label to identify the different circuit.
- Screw caps for double insulation.



**IP 40**



### To be used in combination with the cable trunkings

ITEM	EXTERNAL DIMENSIONS W x H x D mm	MODULE NR. (17,5 mm)	DISPERSIBLE POWER (Watt) CEI 23-49	PACKAGING PIECES
<b>EC60004B</b>	150x170x100	4	11	1/22
<b>EC60008B</b>	200x180x100	8	14	1/15
<b>EC60012B</b>	280x220x100	12	21	1/8
<b>EC60024B</b>	280x350x100	24 (2x12)	30	1/5
<b>EC60036B</b>	400x400x130	36 (2x18)	47	1/4
<b>EC60054B</b>	400x600x130	54 (3x18)	72	-/1

Available with solid white door on request



EC60004B



EC60008B



EC60012B



EC60024B

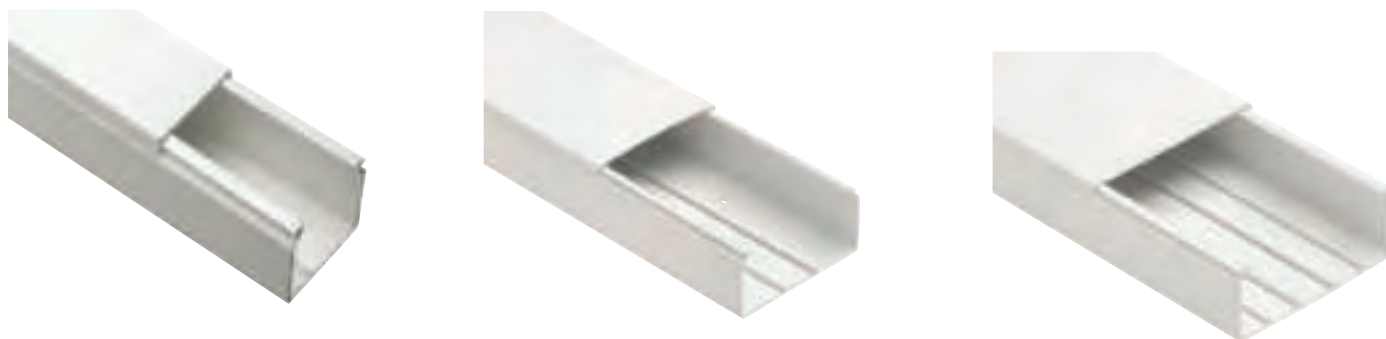


EC60036B



EC60054B

## INSTALLATION INSTRUCTIONS FOR THE CABLE TRUNKING SYSTEMS

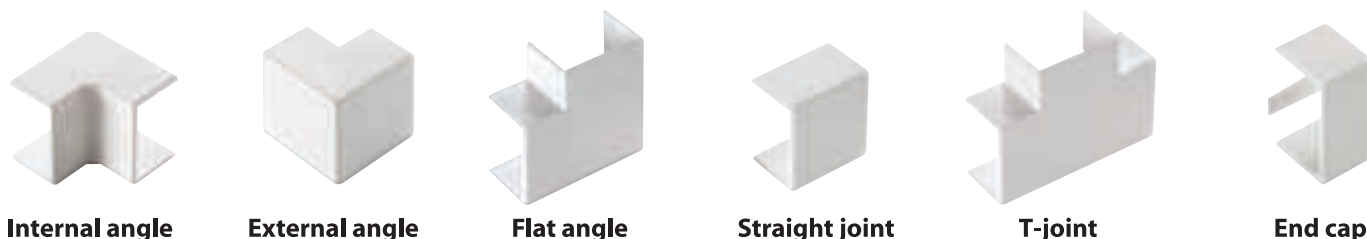


To install the minitrunkings or the cable trunkings on walls or ceilings, or, in any case, on non-conducting surfaces, it is strongly recommended using expanding plugs (our item TC), minimum diameter 4mm and maximum diameter 6mm with their screws, or steel nails, minimum 30cm and maximum 70cm one from the other. Always fix the trunking close to the accessories.

To anchor the trunking to metallic walls not connected to the earthing circuit or in any case to conducting surfaces, it is suggested employing a silicone adhesive or a common mastic, easy to find on the market; taking into account that the indications for use must be carefully followed.

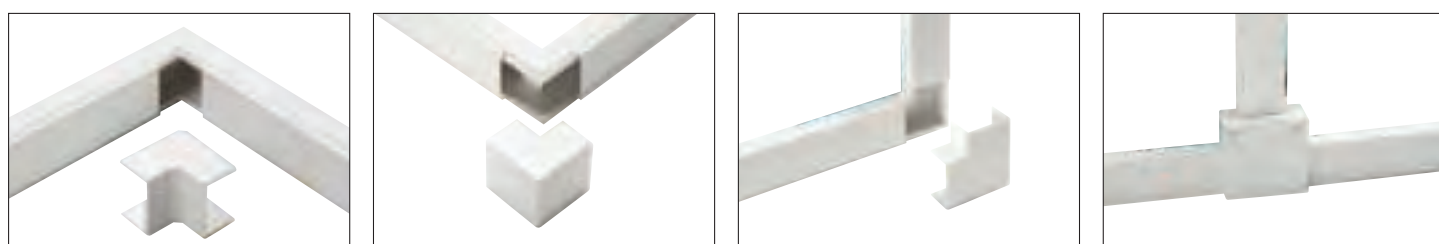
For not particularly hard uses it is suggested installing the trunkings by a double-sided adhesive tape, so that the installation turns out to be easier and quicker. Before proceeding please verify the holding of the adhesive tape on a test sample, which must be smooth and clean.

To cut the trunking and its cover please use a fine toothed hacksaw. To change direction please use our accessories with the same dimension as the trunking, as indicated in our catalogue and according to the indications of the reference Standards EN50085-1, EN50085-2-1.



Once the trunking has been fixed to the wall, the separators, the junction and/or device boxes have been installed and the wiring has been done, the cover can be mounted on the bottom with a simple click; if necessary cut the lid in order to hook the accessories (placed as indicated below) on to the trunking.

In order to gain the correct protection degree IP, the accessories must be fixed to the trunking by securing the tag of the end cap to the trunking through the passing screw and by sticking the accessories for the change of direction to the trunking bottom with a silicon mastic.

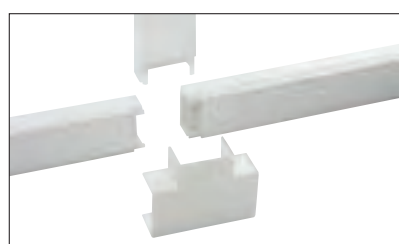


**Internal angle**

**External angle**

**Flat angle**

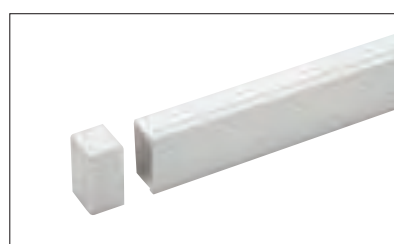
**Separation box for trunkings with separators**



**T-joint**



**Straight joint**



**End cap**

## ■ USABLE AREA OF THE MINITRUNKINGS AND TRUNKINGS SERIES MC AND CP

ITEM	DESCRIPTION	SECTION mm <sup>2</sup>	CABLE TYPE HO7-U/R/K mm <sup>2</sup>			
			1	1,5	2,5	4
ECMC2010	Minitrunking 1 compartment dim. 20x10 mm	126	12	9	6	4
ECMC2210-1	Minitrunking 1 compartment dim. 22x10 mm	128	12	9	6	4
ECMC2210	Minitrunking 2 compartments dim. 22x10 mm	126	12	9	6	4
ECMC3010-1	Minitrunking 1 compartment dim. 30x10 mm	174	17	12	9	6
ECMC3010	Minitrunking 2 compartments dim. 30x10 mm	172	16	12	9	6
ECMC4010	Minitrunking 3 compartments dim. 40x10 mm	220	21	16	11	7
ECMC1517	Minitrunking 1 compartment dim. 15x17 mm	168	16	12	8	6
ECMC2517	Minitrunking 1 compartment dim. 25x17 mm	249	24	18	12	8
ECMC4017-1	Minitrunking 1 compartment dim. 40x17 mm	418	40	30	21	14
ECMC4017	Minitrunking 2 compartments dim. 40x17 mm	416	40	30	21	14
ECMC6017	Minitrunking 3 compartments dim. 60x17 mm	685	65	49	34	23
ECMC5020	Minitrunking 1 compartment dim. 50x20 mm	625	60	45	31	21
ECMC5020-1	Minitrunking 2 compartments dim. 50x20 mm	620	59	44	31	21
ECMC5020-2	Minitrunking 3 compartments dim. 50x20 mm	615	59	44	31	21
ECMC2525	Minitrunking 1 compartment dim. 25x25 mm	480	46	34	24	16
ECMC4025	Minitrunking 1 compartment dim. 40x25 mm	752	72	54	38	25
ECMC1515B	Minitrunking 1 compartment dim. 15x15 mm	148	14	10	7	4
ECMC2020B	Minitrunking 1 compartment dim. 20x20 mm	264	24	17	12	7
ECMC3015B	Minitrunking 1 compartment dim. 30x15 mm	283	26	19	13	7
ECMC3030B	Minitrunking 1 compartment dim. 30x30 mm	652	62	46	32	17
ECCP2540	Cable trunking with cover dim. 25x40 mm	760	72	54	38	25
ECCP2560	Cable trunking with cover dim. 25x60 mm	1100	105	79	55	37
ECCP2580	Cable trunking with cover dim. 25x80 mm	1520	145	109	76	51
ECCP4040	Cable trunking with cover dim. 40x40 mm	1214	116	87	61	40
ECCP4060	Cable trunking with cover dim. 40x60 mm	1950	186	139	98	65
ECCP4080	Cable trunking with cover dim. 40x80 mm	2530	241	181	127	84
ECCP40100	Cable trunking with cover dim. 40x100 mm	3110	296	222	156	104
ECCP5050	Cable trunking with cover dim. 50x50 mm	2076	198	148	104	69
ECCP6040	Cable trunking with cover dim. 60x40 mm	1930	184	138	97	64
ECCP6060	Cable trunking with cover dim. 60x60 mm	3046	290	218	152	102
ECCP6080	Cable trunking with cover dim. 60x80 mm	4215	401	301	211	141
ECCP60100	Cable trunking with cover dim. 60x100 mm	5332	508	381	267	178
ECCP7550	Cable trunking with cover dim. 75x50 mm	3125	296	222	156	104
ECCP8040	Cable trunking with cover dim. 80x40 mm	2530	241	181	127	84
ECCP8060	Cable trunking with cover dim. 80x60 mm	4202	400	300	210	140
ECCP8080	Cable trunking with cover dim. 80x80 mm	5620	535	401	281	187
ECCP80100	Cable trunking with cover dim. 80x100 mm	7064	673	505	353	235
ECCP10040	Cable trunking with cover dim. 100x40 mm	3316	316	237	166	111
ECCP10060	Cable trunking with cover dim. 100x60 mm	5236	499	374	262	175
ECCP10080	Cable trunking with cover dim. 100x80 mm	7156	682	511	358	239
ECCP100100	Cable trunking with cover dim. 100x100 mm	8980	855	641	449	299
ECCP12040	Cable trunking with cover dim. 120x40 mm	4040	385	289	202	135
ECCP12060	Cable trunking with cover dim. 120x60 mm	6340	604	453	317	211
ECCP12080	Cable trunking with cover dim. 120x80 mm	8640	823	617	432	288
ECCP15060	Cable trunking with cover dim. 150x60 mm	7738	737	553	387	258
ECCP20060	Cable trunking with cover dim. 200x60 mm	10278	979	734	514	343
ECCP20080	Cable trunking with cover dim. 200x80 mm	14278	1360	1020	714	476



## CHOICE TABLES FOR CABLE TRUNKING SYSTEMS



DIMENSIONS W x H mm	ITEM					ITEM		
	TRUNKING AND COVER	SEPARATOR	COMPARTMENT NR.	SECTION mm <sup>2</sup>	PACKAGING m	CABLE RETAINER	INTERNAL ANGLE	EXTERNAL ANGLE
25x40	ECCP2540B	NO	-	760	100	-	-	-
25x60	ECCP2560B	NO	-	1100	70	-	-	-
25x80	ECCP2580B	NO	-	1520	56	-	-	-
40x40	ECCP4040B	NO	-	1214	70	ECCO4040	ECAI4040B	ECAE4040B
40x60	ECCP4060B	NO	-	1950	56	ECCO4060	-	-
40x80	ECCP4080B	NO	-	2530	40	ECCO4080	-	-
40x100	ECCP40100B	NO	-	3110	32	ECCO40100	-	-
50x50	ECCP5050B	NO	-	2076	24	-	-	-
60x40	ECCP6040B	NO	-	1930	50	ECCO6040	ECAI6040B	ECAE6040B
60x60	ECCP6060B	NO	-	3046	32	ECCO6060	ECAI6060B	ECAE6060B
60x80	ECCP6080B	NO	-	4215	36	ECCO6080	-	-
60x100	ECCP60100B	NO	-	5332	24	ECCO60100	-	-
75x50	ECCP7550B	ECSESB	2	3125	40	-	-	-
80x40	ECCP8040B	ECSESB	2	2530	40	ECCO8040	ECAI8040B	ECAE8040B
80x60	ECCP8060B	ECSESB	2	4202	28	ECCO8060	ECAI8060B	ECAE8060B
80x80	ECCP8080B	ECSESB	2	5620	30	ECCO8080	ECAI8080B	ECAE8080B
80x100	ECCP80100B	ECSESB	2	7064	24	ECCO80100	-	-
100x40	ECCP10040B	ECSESB	2	3316	28	ECCO10040	ECAI10040B	ECAE10040B
100x60	ECCP10060B	ECSESB	2	5236	20	ECCO10060	ECAI10060B	ECAE10060B
100x80	ECCP10080B	ECSESB	2	7156	24	ECCO10080	ECAI10080B	ECAE10080B
100x100	ECCP100100B	ECSESB	2	8980	16	ECCO100100	-	-
120x40	ECCP12040B	ECSESB	2	4040	24	ECCO12040	ECAI12040B	ECAE12040B
120x60	ECCP12060B	ECSESB	2	6340	20	ECCO12060	ECAI12060B	ECAE12060B
120x80	ECCP12080B	ECSESB	2	8640	16	ECCO12080	ECAI12080B	ECAE12080B
150x60	ECCP15060B	ECSESB	4	7738	16	ECCO150	ECAI15060B	ECAE15060B
200x60	ECCP20060B	ECSESB	4	10278	16	ECCO200	ECAI20060B	ECAE20060B
200x80	ECCP20080B	ECSESB	4	14278	12	ECCO200	ECAI20080B	ECAE20080B

## CHOICE TABLES FOR WALL MOUNTING MODULAR ENCLOSURE SERIES 600

(for further information see page 217)

ITEM	EC60004B	EC60008B	EC60012B	EC60024B	EC60036B	EC60054B
	EXTERNAL DIM. W x H x D mm	150x170x100	200x180x100	280x220x100	280x350x100	400x400x130



ITEM								
FLAT ANGLE	STRAIGHT JOINT	JOINT T	END CAP	KIT FOR ITALIAN DEVICES	BLANK COVER	KIT HOLE CENTRE DISTANCE 60/67	KIT INDUSTRIAL SOCKETS	SEPARATION BOX
-	-	-	-	-	-	-	-	ECSSB2
-	-	-	-	-	-	-	-	ECSSB2
-	-	-	-	-	-	-	-	ECSSB3
ECAP4040B	ECGU4040B	ECT4040B	ECTT4040B	-	-	-	-	ECSSB2
-	-	-	-	-	-	-	-	ECSSB2
-	-	-	-	-	-	-	-	ECSSB3
-	-	-	-	-	-	-	-	-
-	-	-	-	-	-	-	-	ECSSB2
ECAP6040B	ECGU6040B	ECT6040B	ECTT6040B	-	-	-	-	ECSSB2
ECAP6060B	ECGU6060B	ECT6060B	ECTT6060B	-	-	-	-	ECSSB2
-	-	-	-	-	-	-	-	ECSSB3
-	-	-	-	-	-	-	-	-
-	-	-	-	-	-	-	-	ECSSB3
ECAP8040B	ECGU8040B	-	ECTT8040B	-	-	-	-	ECSSB2
ECAP8060B	ECGU8060B	-	ECTT8060B	ECKIT80B	ECCPB	-	-	ECSSB2
ECAP8080B	ECGU8080B	-	ECTT8080B	-	-	-	-	ECSSB3
-	-	-	-	-	-	-	-	-
ECAP10040B	ECGU10040B	-	ECTT10040B	-	-	-	-	ECSSB2
ECAP10060B	ECGU10060B	-	ECTT10060B	ECKIT100B	ECCPB	ECKIT100A	ECKIT100C	ECSSB2
ECAP10080B	ECGU10080B	-	ECTT10080B	-	-	-	-	ECSSB3
-	-	-	-	-	-	-	-	-
ECAP12040B	ECGU12040B	-	ECTT12040B	-	-	-	-	ECSSB2
ECAP12060B	ECGU12060B	-	ECTT12060B	ECKIT120B	ECCPB	ECKIT120A	ECKIT120C	ECSSB2
ECAP12080B	ECGU12080B	-	ECTT12080B	-	-	-	-	ECSSB3
ECAP15060B	ECGU15060B	-	ECTT15060B	ECKIT150B	ECCPB	ECKIT150A	ECKIT150C	ECSSB3
ECAP20060B	ECGU20060B	-	ECTT20060B	-	-	-	-	ECSSB3
ECAP20080B	ECGU20080B	-	ECTT20080B	-	-	-	-	ECSSB3